



MC-Protector

Protective Coating for Concrete and Asphalt Machinery and Metal Formworks

Product Properties

- Avoids adhesion of concrete to machinery surfaces
- Enables easy cleaning of mixers and machinery just by spraying water
- Protect the machinery and metals forms from corrosion, when not in use
- Free from solvents and aggressive chemicals
- Can be sprayed on the surfaces
- Economical
- Avoids the adhesion of asphalt to applied surfaces during the drying process of asphalt
- Protect valuable machinery from damage on account of otherwise mechanical cleaning methods
- Very effective as maintenance product
- Does not mix with concrete

Areas of Application

- Concrete mixers and batching plants
- Transport concrete trucks, transit mixers and concrete pumping machinery
- Pavers and curbers
- Coating for chutes, concrete buckets, etc
- Coating for any metal part coming in contact with cement splashes or concrete
- All asphalt machinery and parts coming in contact with asphalt
- Road rollers and paving machinery
- Protective and corrosion inhibiting coat for metal forms and scaffolding
- Coating for protection of any metal surface when not in use

Application Notes

General

MC-Protector is a universal protective coating for machineries in the civil engineering industry. Its use facilitates the cleaning and maintenance of concrete and asphalt machinery by avoiding the adhesion of cement and concrete as well as the asphalt remnants. Normally the cement and concrete bonds with metallic surfaces in contact and harden on the surfaces.

The cleaning of this set concrete and asphalt is not only difficult but also mechanical methods have to be resorted to. This invariably damages the surfaces making them rough. In addition the welding and other joints are disturbed. A simple coating of **MC-Protector** avoids such operations and enables the cleaning of machinery by using water. **MC-Protector** coated surfaces of formworks and scaffoldings are protected from rusting when not in use, especially during monsoons. In the long run use, **MC-Protector** preserves the costly machinery and lowers maintenance and repair costs.

Advantages

Use of **MC-Protector** helps in bringing down the maintenance costs of the expensive equipments. Also, the application of the coating being very simple and completely hassle free, has a widespread appeal.

Instructions for use

The surfaces on which **MC-Protector** is to be applied should be prepared by removing the cement splashes, concrete remnants and asphalt. Mechanical or sometimes chemical means will have

to be used to get surface absolutely clean. The surface should then be cleaned with water to remove dust etc. **MC-Protector** can then be applied on the full surface by brushes, cotton rags or even sprayed when the surfaces are larger. After the completion of the machinery use, the surfaces can be easily cleaned with water spraying.

Further Instructions / Precautions

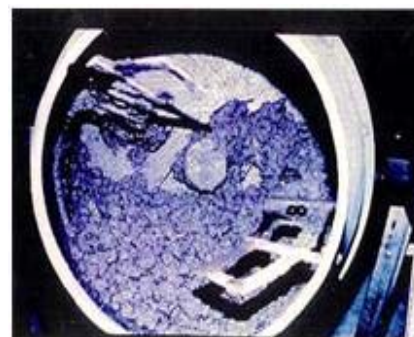
RMC Trucks and Batching Plants



Pavers and Finishers



Old Fashioned Mixers



Technical Data For MC-Protector

| Characteristic | Unit | Value | Comments |
|---------------------------------|---------------------|-----------|----------|
| Density | g / cm ³ | 0.85 | ± 0.02 |
| Minimum application temperature | ° C | 20 ° C | |
| Consumption | g / m ² | 100 - 150 | |

Product Characteristics for MC-Protector

| | |
|------------------------|---|
| Type of Product | Protective coating for concrete and asphalt machinery and metal formworks |
| Form | Liquid |
| Colour | Light Yellow |
| Shelf Life | 12 months |
| Delivery | 30 kg pails |
| Storage | In Unopened Packaging. Protect from Rain, Direct Sunlight, Heat and Frost |
| Disposal | Empty packs completely and dispose off carefully to protect our Environment |

Note: The information on this data sheet is based on our experiences and correct to the best of our knowledge. It is, however, not binding. It has to be adjusted to the individual structure, application purpose and especially to local conditions. Our data refers to the accepted engineering rules, which have to be observed during application. This provided we are liable for the correctness of this data within the scope of our terms and conditions of sale-delivery-and-service. Recommendations of our employees, which may differ from the data contained in our information sheets, are only binding if given in written form. The accepted engineering rules must be observed at all times. E. & O.E.

Older editions are invalid and may not be used anymore. If a technically revised new edition is issued, this edition becomes invalid.

Edition: January 2013